



# CHIMES

---

## GREENHILLS



CHIMES  
GREENHILLS





— AFFORDABLE AFFLUENCE IN ANNAPOLIS —

Hear the sounds of class and harmony at **Chimes Greenhills**. Located along Annapolis Street in Greenhills, **Chimes** offers affordable alternative to living in a prominent Metro Manila address.

HLURB LS# 030727



# CHIMES GREENHILLS



## CHIRPS AND CHARMS

Listen to the elements that entice you to **Chimes**.

*A tinkling tune of opportunity.* Seize the exciting opportunity of owning a Greenhills property.

*A ring of retail therapy.* Put yourself within walking distance from the Greenhills Shopping Center.

*A touch of prestige playing.* Watch the Summit Hotel in **Chimes** and the prestige to the Development.

Nearby commercial areas:

- Greenhills Shopping Center
- Robinsons Galleria
- Robinsons Magnolia

Nearby academic institutions:

- Xavier School
- Immaculate Conception Academy
- O.B. Montessori
- La Salle Greenhills
- Saint Pedro Poveda College

Nearby medical facilities:

- Cardinal Santos Medical Center
- The Medical City





Artists Perspective

## A Steady Cadence

**Land Area:** 1,129.00 sqm

**Number of towers:** 1 High-Rise Tower

**Number of residential units:** 397 units

**Number of residential floors:** 24 floors



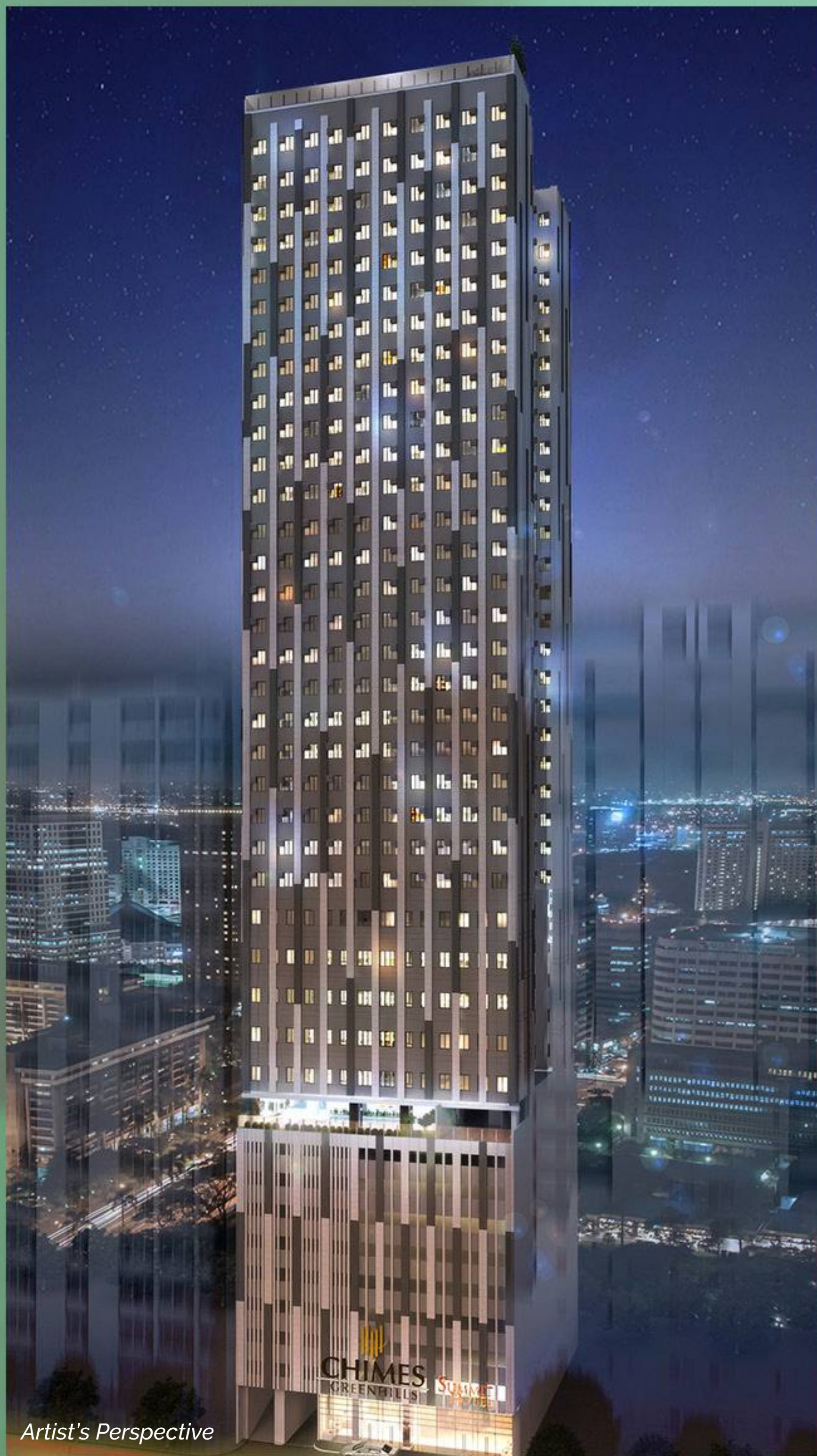
# DESIGN PARTNERS



Architectural	Jonathan O. Gan & Associates
Structural	Sy <sup>2</sup> + Associates
Plumbing, Sanitary & Fire Protection	F.L. Figuera & Associates
Electrical	MA. Alix & Partners
Mechanical	L.R Punzalan & Associates

Consistent with the development's name, rods of chimes inspire the tower's design. A stream facade with glass and natural stone translates this to create a Zen atmosphere promoted by wind chimes.





Artist's Perspective

## BUILDING FACILITIES / SERVICES

- Main Entrance lobby with reception
- CCTV monitoring on selected common areas
- Water is supplied by an elevated water tank and cistern
- Standby power generator
- Standby power at selected outlets and lighting fixtures in residential units
- Individual mail boxes at the ground floor
- Centralized garbage holding room
- Garbage holding area per residential floor
- Building administration office
- Security room
- Common drying cage at roof deck
- Transformer and genset room
- Sewage treatment plant located below basement 3
- Two fire exit stairs with well-lit signage confirming to the Fire Code of the Philippines



CAMP CRAME

UNIT J 2BR AREA: 48.98 SQM.  
UNIT K 1BR AREA: 38.59 SQM.  
UNIT L 1BR AREA: 38.57 SQM.  
UNIT M 1BR AREA: 38.59 SQM.  
UNIT N 2BR AREA: 48.98 SQM.

TYPICAL FLOOR PLAN

LOW ZONE  
(17th - 20th Floor)

UNIT I STUDIO AREA: 22.16 SQM.

UNIT H STUDIO AREA: 21.72 SQM.

UNIT G STUDIO AREA: 21.72 SQM.

UNIT F STUDIO AREA: 22.16 SQM.

UNIT O STUDIO AREA: 25.13 SQM.

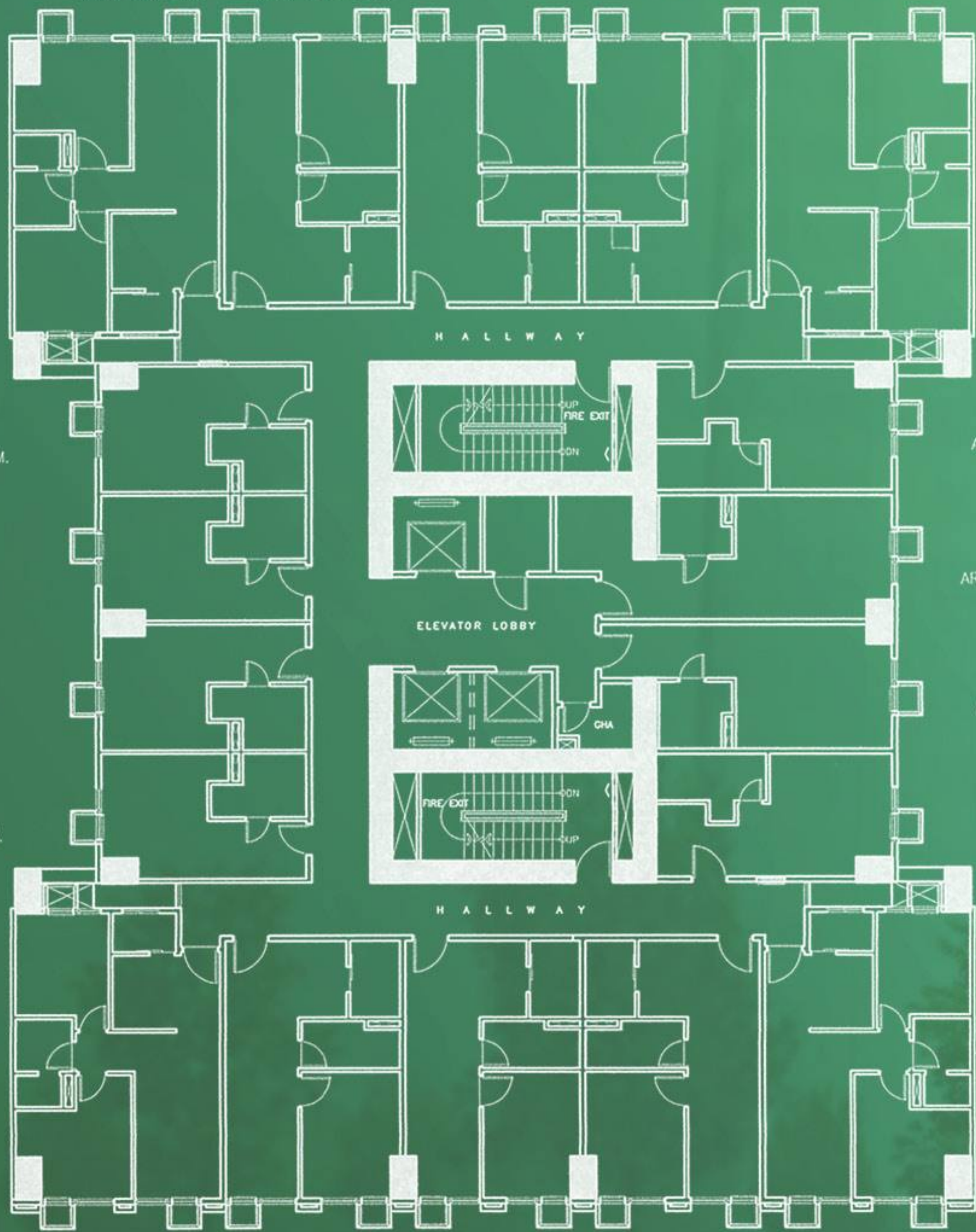
UNIT P STUDIO AREA: 33.67 SQM.

UNIT Q STUDIO AREA: 27.28 SQM.

UNIT R STUDIO AREA: 25.13 SQM.

UNIT E 2BR AREA: 48.98 SQM.  
UNIT D 1BR AREA: 38.59 SQM.  
UNIT C 1BR AREA: 38.57 SQM.  
UNIT B 1BR AREA: 38.59 SQM.  
UNIT A 2BR AREA: 48.98 SQM.

ANNAPOLIS STREET





CAMP CRAME

UNIT J 2BR AREA: 48.98 SQM.  
UNIT K 1BR AREA: 38.59 SQM.  
UNIT L 1BR AREA: 38.57 SQM.  
UNIT M 1BR AREA: 37.00 SQM.  
UNIT N1 STUDIO AREA: 21.20 SQM.

TYPICAL FLOOR PLAN

MID ZONE

(21st - 33rd Floor)

UNIT N2 STUDIO AREA: 29.05 SQM.

UNIT O STUDIO AREA: 25.13 SQM.

UNIT P STUDIO AREA: 33.67 SQM.

UNIT Q STUDIO AREA: 27.28 SQM.

UNIT R STUDIO AREA: 25.13 SQM.

UNIT I STUDIO AREA: 22.16 SQM.

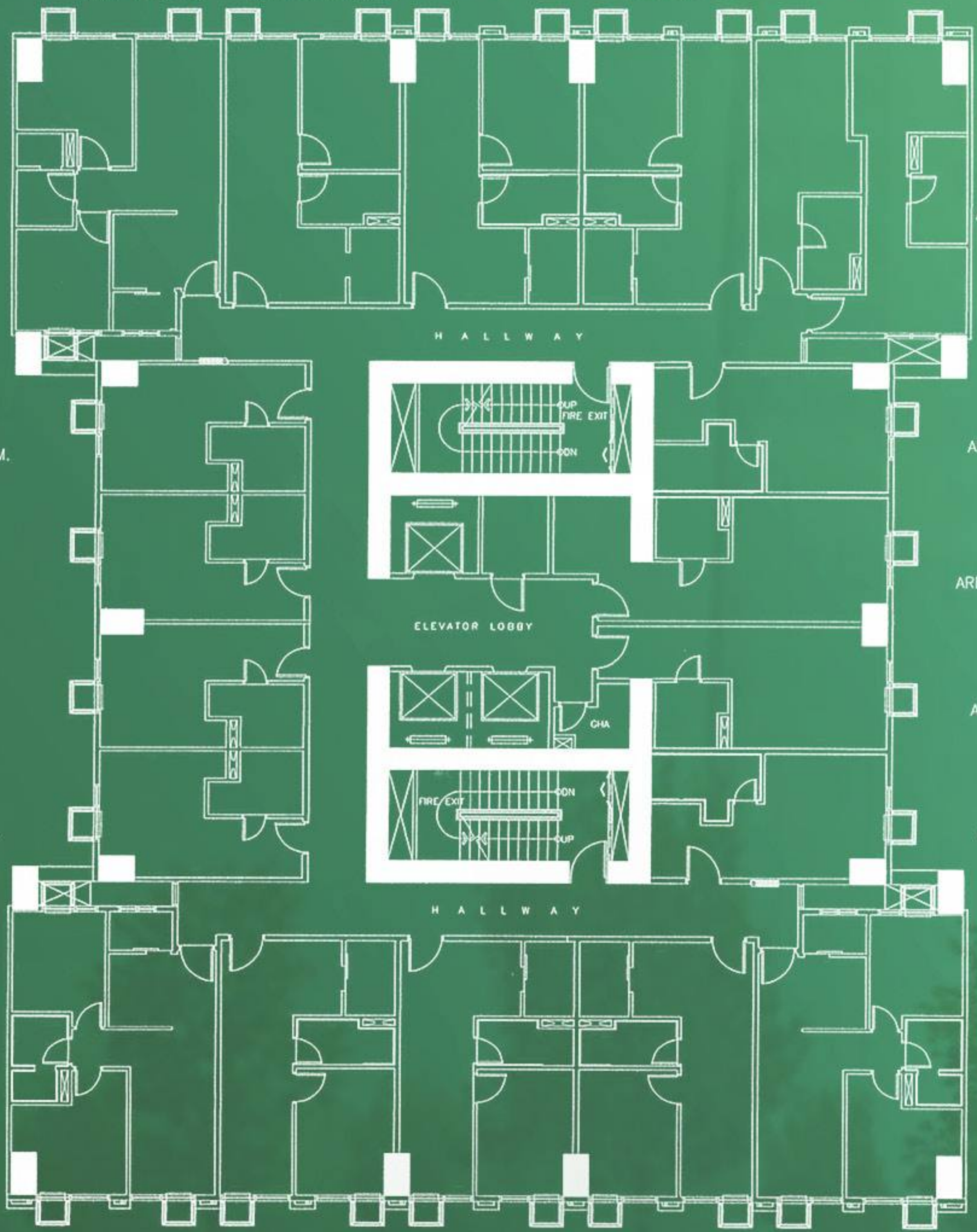
UNIT H STUDIO AREA: 21.72 SQM.

UNIT G STUDIO AREA: 21.72 SQM.

UNIT F STUDIO AREA: 22.16 SQM.

UNIT E 2BR AREA: 48.98 SQM.  
UNIT D 1BR AREA: 38.59 SQM.  
UNIT C 1BR AREA: 38.57 SQM.  
UNIT B 1BR AREA: 38.59 SQM.  
UNIT A 2BR AREA: 48.98 SQM.

ANNAPOLIS STREET





CAMP CRAME

UNIT F  
2BR  
AREA: ±73.26 SQM.

UNIT G  
2BR  
AREA: ±69.79 SQM.

UNIT H  
2BR  
AREA: ±73.26 SQM.

TYPICAL FLOOR PLAN

HIGH ZONE  
(34th - 39th Floor)

UNIT E  
2BR  
AREA: ±43.88 SQM.

UNIT I  
2BR  
AREA: ±58.80 SQM.

UNIT D  
2BR  
AREA: ±43.88 SQM.

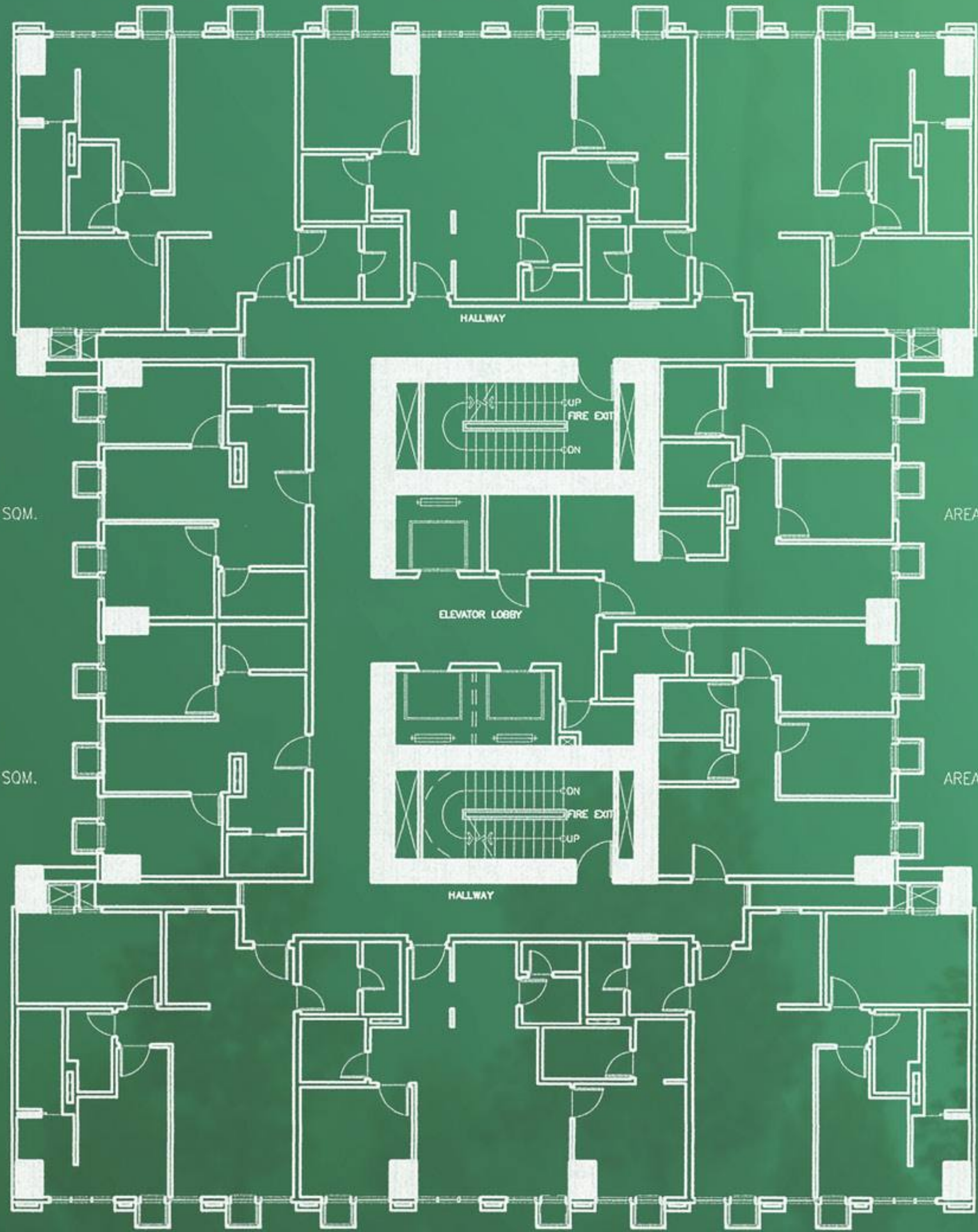
UNIT J  
2BR  
AREA: ±53.67 SQM.

UNIT C  
2BR  
AREA: ±73.26 SQM.

UNIT B  
2BR  
AREA: ±69.79 SQM.

UNIT A  
2BR  
AREA: ±73.26 SQM.

ANNAPOLIS STREET





# UNIT OPTIONS



Actual photo of One-Bedroom model unit



Actual photo of Two-Bedroom model unit

## Unit Type

**STUDIO**

**Approx. 22 - 34 sqm**

**1 Bedroom**

**Approx. 37 - 39 sqm**

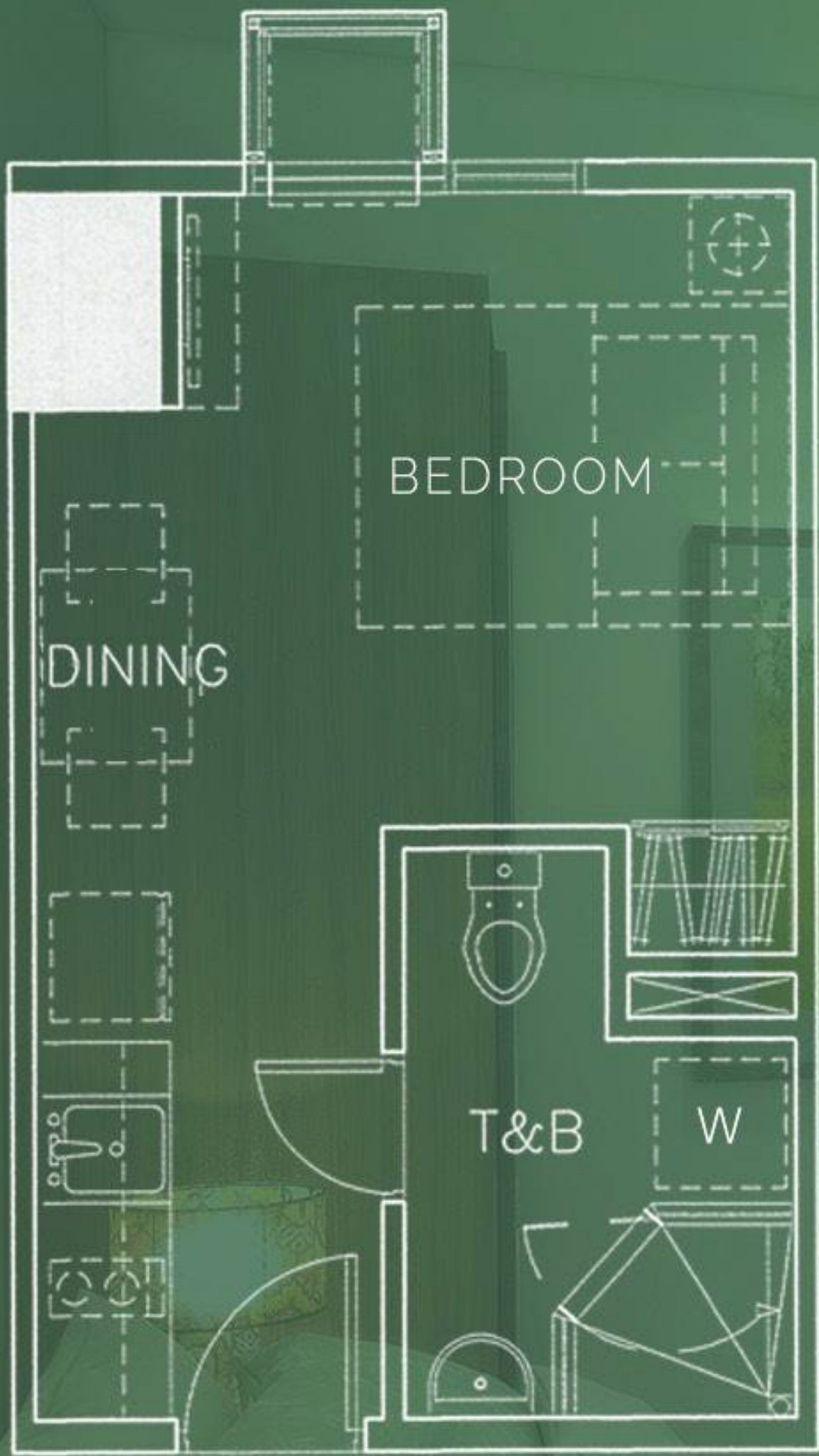
**2 Bedroom**

**Approx. 44 - 86 sqm**

**3 Bedroom**

**Approx. 109 - 126 sqm**





**STUDIO**

Approx. 22.00 sqm

DISCLAIMER: For training purposes only. All details herein are subject to change without prior notice and do not constitute any part of a contract or offer.

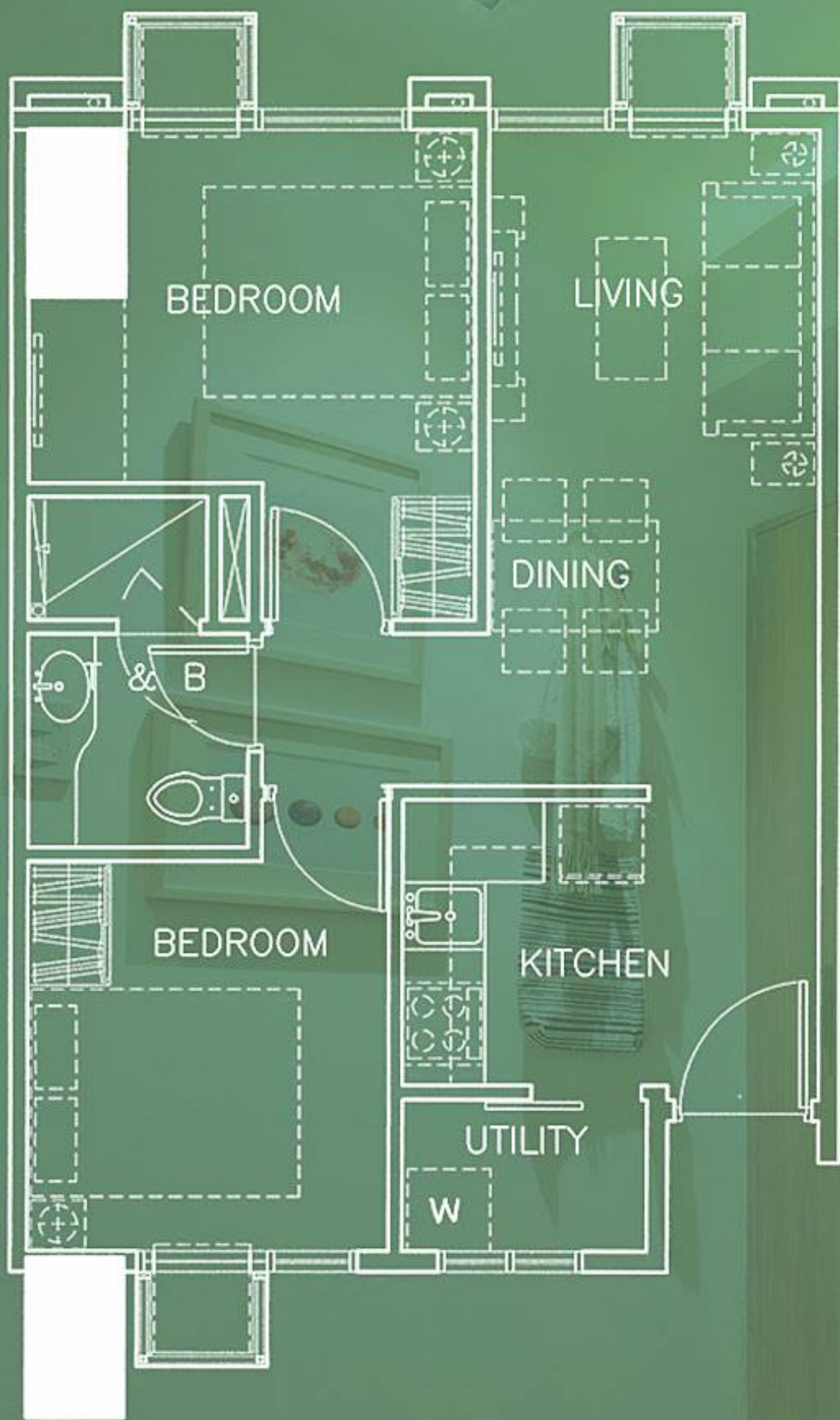




# ONE-BEDROOM

Approx. 37.00 sqm





**TWO-BEDROOM**

Approx. 49.00 sqm

*DISCLAIMER: For training purposes only. All details herein are subject to change without prior notice and do not constitute any part of a contract or offer.*



# UNIT FEATURES

## *Typical Residential Unit Features:*

- Entrance panel door with viewer
- Intercom per unit connected to the reception
- Automatic smoke detector and fire alarm with sprinkler system in all units.

## *Provision for:*

- Individual electric and water meter
- Telephone line per unit
- Cable TV line at living area and master bedroom
- Space and electric outlet for window type air conditioning system
- Space and utilities for single tub washing machine





# UNIT DELIVERABLES

<b>PARTICULAR</b>	<b>BEDROOMS</b>	<b>LIVING/DINING</b>	<b>KITCHEN</b>	<b>MASTER/COMMON T&amp;B</b>
<b>FLOOR</b>	<i>LAMINATED FLOORING</i>	<i>HOMOGENEOUS TILES</i>		<i>CERAMIC TILES</i>
<b>WALL</b>	<i>PLASTER WALL WITH PAINT FINISH</i>			<i>COMBINATION OF CERAMIC TILES AND PLASTER WALL WITH PAINT FINISH</i>
<b>CEILING</b>	<i>PAINTED SLAB SOFFIT (NO CEILING)</i>			<i>MOISTURE-RESISTANT GYPSUM BOARD IN PAINT FINISH</i>
<b>OTHERS</b>	<i>BEDROOM CLOSET</i>	<i>N/A</i>	<ul style="list-style-type: none"> <li>- GRANITE COUNTERTOP</li> <li>- RANGE HOOD</li> <li>- 2-BURNER COOK TOP (STUDIO AND 1 BR)</li> <li>- 4-BURNER COOK TOP (2 BR AND 3 BR)</li> <li>- OVERHEAD AND BASE CABINETS</li> </ul>	<ul style="list-style-type: none"> <li>- MIRROR</li> <li>- SHOWER ENCLOSURE</li> <li>- PROVISION FOR SINGLE POINT HOT WATER LINE AT SHOWER AREA</li> </ul>



# AMENITIES

- Main Lobby
- Life Fitness Gym
- Play Pod
- Game Station
- Private Theater
- Leisure Pool
- Kiddie Pool
- Sky Lounge
- Sky Garden



Artist's Perspective

**MAIN LOBBY**



Artist's Perspective

**PRIVATE THEATER**



# AMENITIES



DISCLAIMER: For training purposes only. All details herein are subject to change without prior notice and do not constitute any part of a contract or offer.



# AMENITIES



Artist's Perspective

**SKY GARDEN**



Artist's Perspective

**SKY LOUNGE**

DISCLAIMER: For training purposes only. All details herein are subject to change without prior notice and do not constitute any part of a contract or offer.



# AMENITIES



*DISCLAIMER: For training purposes only. All details herein are subject to change without prior notice and do not constitute any part of a contract or offer.*