

THE WESTIN

MANILA
SONATA PLACE



Owned and developed by Robinsons Land Corporation. The Residences at The Westin Manila Sonata Place, with legal name Sonata Primes is not owned, developed or sold by Starwood Hotels & Resorts Worldwide, Inc., Starwood Asia Pacific Hotels & Resorts Pte. Ltd. or their affiliates. Robinsons Land Corporation uses the Westin® trademarks and trade names under a license from Starwood Asia Pacific Hotels & Resorts Pte. Ltd. If that license is terminated or expires without renewal, the project will no longer be associated with or have any right to use, the Westin® trade names or trademarks.



RIGHT IN THE HEART OF VIBRANT ORTIGAS



Grand Lobby



Artist's render of The Westin Manila Sonata Place Lobby

Seasonal Tastes (All-day Dining)

Other Hotel F&B Concepts:

Grab-n-Go
(Lobby Lounge Snack Bar)

Tapas Bar
(Roofdeck Bar and Dining)

Specialty Dining

Grand Ballroom



Other Hotel Convention Facilities:

Two (2) Function Rooms
(approximately 120 pax
each)

Four (4) Meeting Rooms
(approximately 50 pax
each)

Business Center

Heavenly Spa[®]



Other Hotel Amenities:

Fitness Center

Lap and Kiddie Pools

Executive Club Lounge

Artist's render of The Westin Manila Sonata Place Heavenly[®] Spa

Typical Hotel Guest Room



Artist's render of The Westin Manila Sonata Place Typical Guest Room

Site Development Plan



Private Drop-off Area

An artist's rendering of a modern building's private drop-off area. The scene features a large, multi-story building with a prominent glass facade and a balcony. In the foreground, a circular fountain with several water jets is surrounded by greenery. A silver convertible car is parked on the left, and a person in a blue dress stands near the building entrance. The overall atmosphere is clean, modern, and well-maintained.

Building Features:

Exclusive Residential
Access

24-hour security and bldg.
maintenance

Fully addressable fire
detection and alarm system

Access card for elevators
and units

CCTV in common areas and
elevators

100% back-up power

Pre-assigned appurtenant
parking slots for all
residential units

Artist's render of the Private Drop-off Area

Basement Parking

<i>Unit Type</i>	<i>Area (in sqm)</i>	<i>Appurtenant Parking Slot/s</i>	<i>Assigned Parking Level</i>
<i>1-Bedroom</i>	<i>47.29 – 82.70</i>	<i>One (1) regular slot</i>	<i>Levels 4 – 5</i>
<i>2-Bedroom</i>	<i>127.65 and below</i>	<i>One (1) tandem slot</i>	<i>Levels 1 – 5</i>
	<i>Above 127.65</i>	<i>Two (2) regular slots</i>	<i>Levels 2 – 4</i>
<i>3-Bedroom</i>	<i>173.79 – 254.77</i>	<i>Two (2) regular slots</i>	<i>Levels 1 – 2</i>
<i>Penthouse</i>	<i>236.39 – 249.42</i>	<i>Three (3) regular slots</i>	<i>Level 1</i>

- Parking slot rights must be purchased with the unit
- Appurtenant parking slot/s **cannot be waived or reassigned**
- Additional parking requests will be priced at a premium of +10% and is still subject for approval of management

The Haven



**RESIDENTIAL
FLOORS**
5th – 50th Floors

AMENITY
The Haven
1st – 4th Floors

PARKING
Basement Levels 1 – 5

Grand Lobby

An artist's rendering of a modern, high-ceilinged grand lobby. The space features a long, curved reception desk with a white marble top and a dark base. Two decorative light fixtures, composed of numerous small, glowing rectangular blocks, are mounted on the wall behind the desk. The floor is covered in a large, patterned rug with shades of brown, green, and grey. Large windows on the left side offer a view of the outdoors, and a small table with a vase of flowers is positioned near the entrance.

Other amenities at the Ground Floor:

Private Drop-off Area

Concierge Desk

Mail Room

Retail Spaces

Artist's render of the Grand Lobby of
The Residences at The Westin Manila Sonata Place

Function Room

Other amenities at the Second Floor:

Reception Center

Pre-function Areas

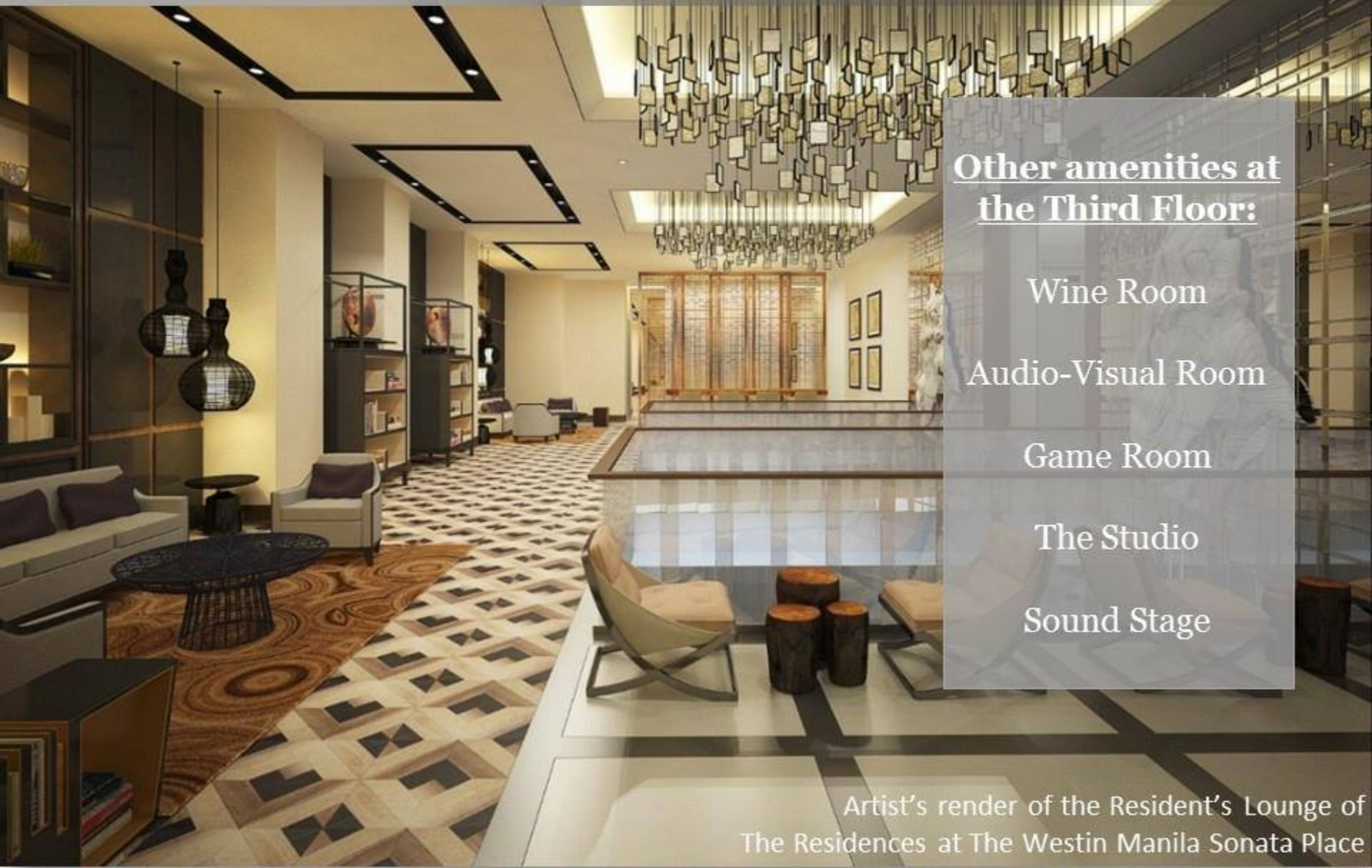
Business Lounge

Meeting Rooms

Board Room

Artist's render of the Function Room of
The Residences at The Westin Manila Sonata Place

Resident's Lounge



Other amenities at the Third Floor:

Wine Room

Audio-Visual Room

Game Room

The Studio

Sound Stage

Artist's render of the Resident's Lounge of
The Residences at The Westin Manila Sonata Place

Private Theater



Other amenities at the Third Floor:

Recital Studio

The Playhouse

Residential
Administration Office

Tee on Third

Artist's render of the Private Theater of
The Residences at The Westin Manila Sonata Place

Indoor Lap Pool

Other amenities at the Fourth Floor:

Kiddie Pool

Pool Deck and Lounge

Fitness Centre

Outdoor Fitness Area

Changing Rooms with
Sauna and Hot Tub

Move Studio

Artist's render of the Indoor Lap Pool of
The Residences at The Westin Manila Sonata Place

Residential Floors



RESIDENTIAL FLOORS

5th – 50th Floors

AMENITY

The Haven
1st – 4th Floors

PARKING

Basement Levels 1 – 5

THE SPLENDOR OF SPACE TO LIVE YOUR DREAMS

Unit Type	Size Range* (in sq. m.)	Size Range* (in sq. ft.)
1-Bedroom	47.29 – 82.70	509 – 890
2-Bedroom	96.52 – 160.17	1,039 – 1,724
3-Bedroom	173.79 – 254.16	1,871 – 2,736
Penthouse	236.39 – 249.42	2,544 – 2,685
TOTAL: 344 units		

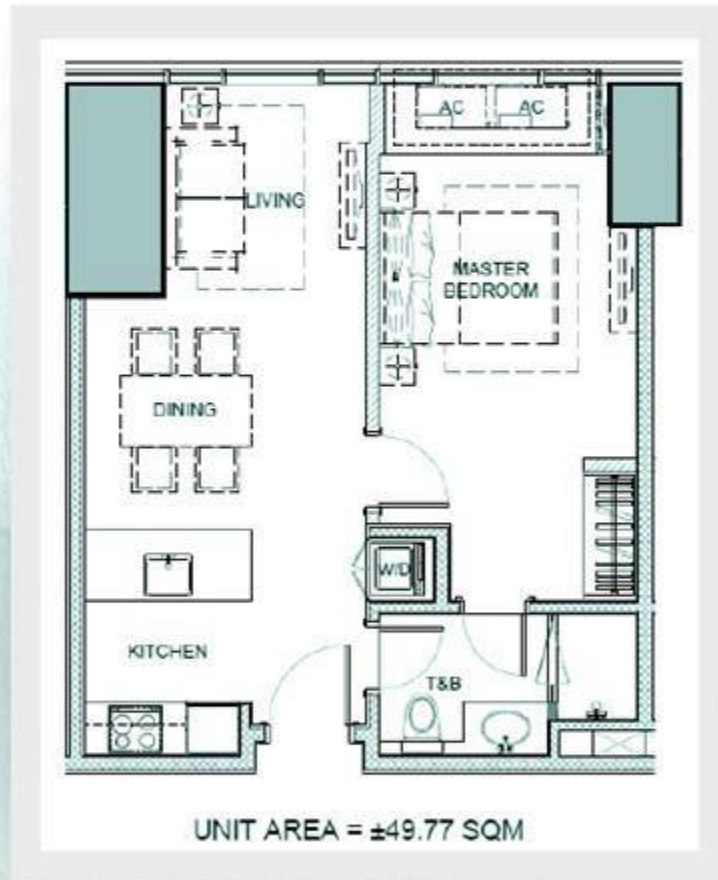
*sizes include balconies, where applicable

Zoning

Zone	Zoning	Floors	Units per Floor				
			1BR	2BR	3BR	PH	TOTAL
1	1BR Zone	5 th – 11 th	12				12
2	1BR Zone	12 th – 16 th	12				12
3	1BR and 2BR Zone	17 th – 23 rd	8	2			10
4	1BR and 2BR Zone	24 th and 27 th	4	3			7
5	1BR and 2BR Zone	25 th and 26 th	4	3			7
6	2BR Zone	28 th – 35 th		6			6
7	1BR and 2BR Zone	36 th – 39 th	2	4			6
8	3BR Zone	40 th – 46 th			4		4
9	2BR and 3BR Zone	47 th		2	2		4
10	2BR and 3BR Zone	48 th		2	2		4
11	Lower Penthouse*	49 th				4	4
12	Upper Penthouse*	50 th				2	2

**with bi-level units*

Typical 1-Bedroom Unit Floor Plan



UNITS B, D, H, J 1-Bedroom

- Island kitchen layout
- Dual-access T&B



Living/Dining Area



Artist's render of a 1-Bedroom unit

Living/ Dining Area

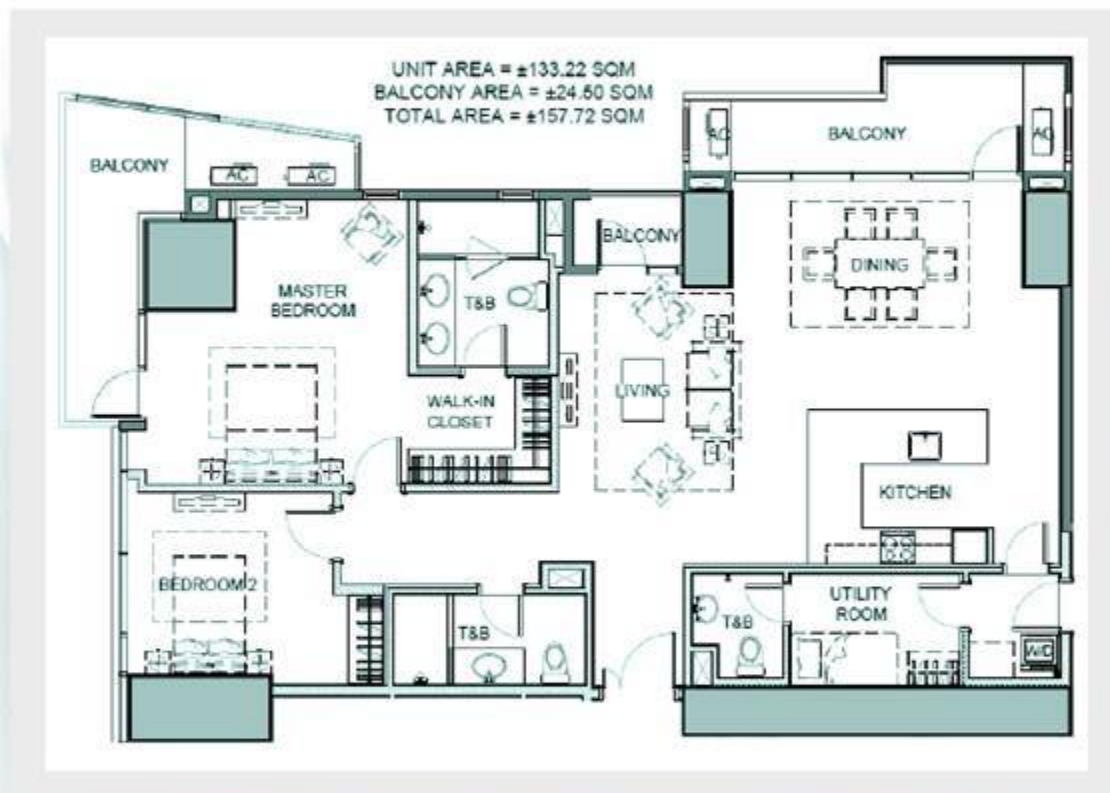


Artist's render of a 1-Bedroom unit

Master Bedroom | Master T&B



Typical 2-Bedroom Unit Floor Plan



UNIT D 2-Bedroom

- U-type kitchen layout
- Breakfast nook
- Utility room
- 3 Balconies (1 corner balcony)
- Walk-in closet



Living/Dining Area



Artist's render of a 2-Bedroom unit

Dining Area



Artist's render of a 2-Bedroom unit

Master Bedroom



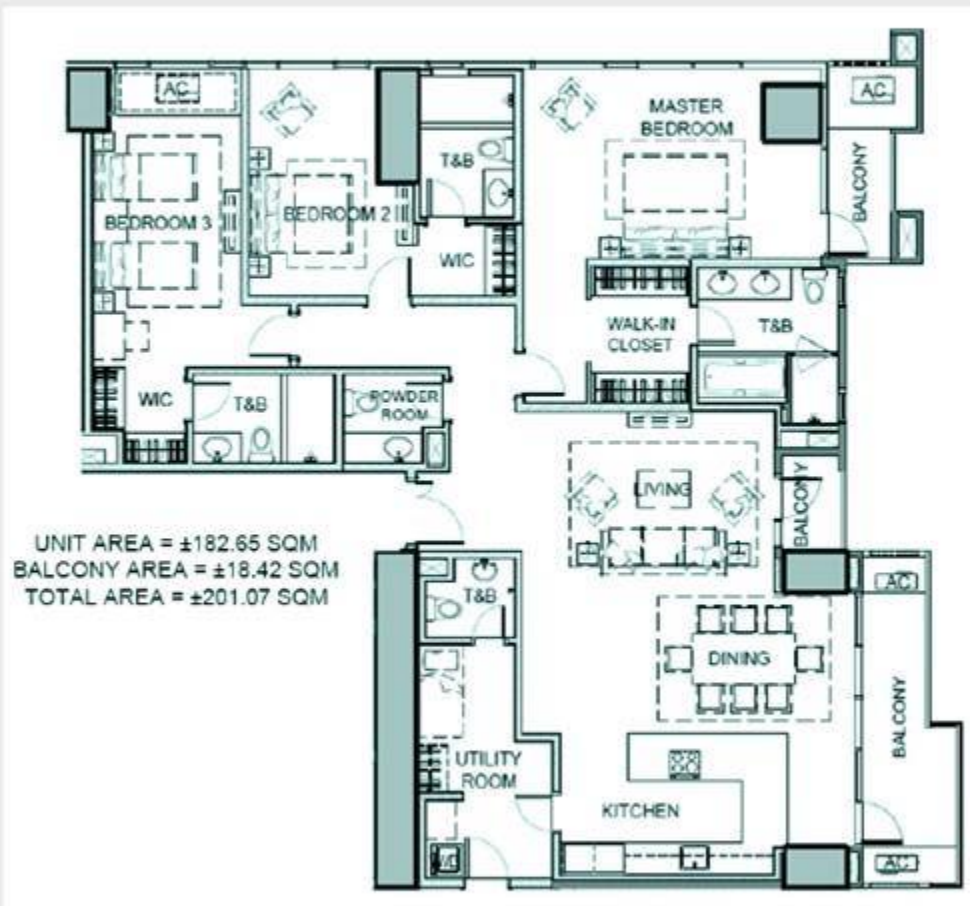
Artist's render of a 2-Bedroom unit

Master T&B



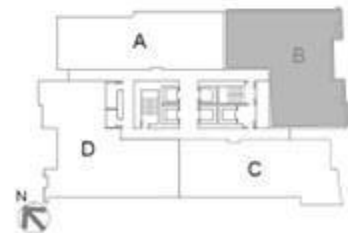
Artist's render of a 2-Bedroom unit

Typical 3-Bedroom Unit Floor Plan



UNIT B 3-Bedroom

- Corner unit
- Powder room
- U-shaped kitchen layout
- Utility room
- Utility access
- 3 Balconies
(1 corner balcony)
- Walk-in closet



Living/Dining Area



Artist's render of a 3-Bedroom unit

Living/Dining Area



Artist's render of a 3-Bedroom unit

Master Bedroom



Artist's render of a 3-Bedroom unit

Master T&B



UNIT VIEWS AND ORTIGAS SKYLINE



Owned and developed by Robinsons Land Corporation. The Residences at The Westin Manila Sonata Place, with legal name Sonata Premier is not owned, developed or sold by Starwood Hotels & Resorts Worldwide, Inc., Starwood Asia Pacific Hotels & Resorts Pte. Ltd. or their affiliates. Robinsons Land Corporation uses the Westin® trademarks and trade names under a license from Starwood Asia Pacific Hotels & Resorts Pte. Ltd. If this license is terminated or expires without renewal, the project will no longer be associated with or have any right to use, the Westin® trade names or trademarks.



North View: Wack-Wack/ SM Megamall



West View: Wack-Wack/ Shangri-La



Southwest View: Westin Hotel/ BGC Skyline



South View: Ortigas Business District/ BGC Skyline



Southeast View: San Miguel Ave./ Laguna Lake



East View: San Miguel Headquarters/ San Miguel Ave.

